



Brand New Forest Broadband Needs Survey 2013

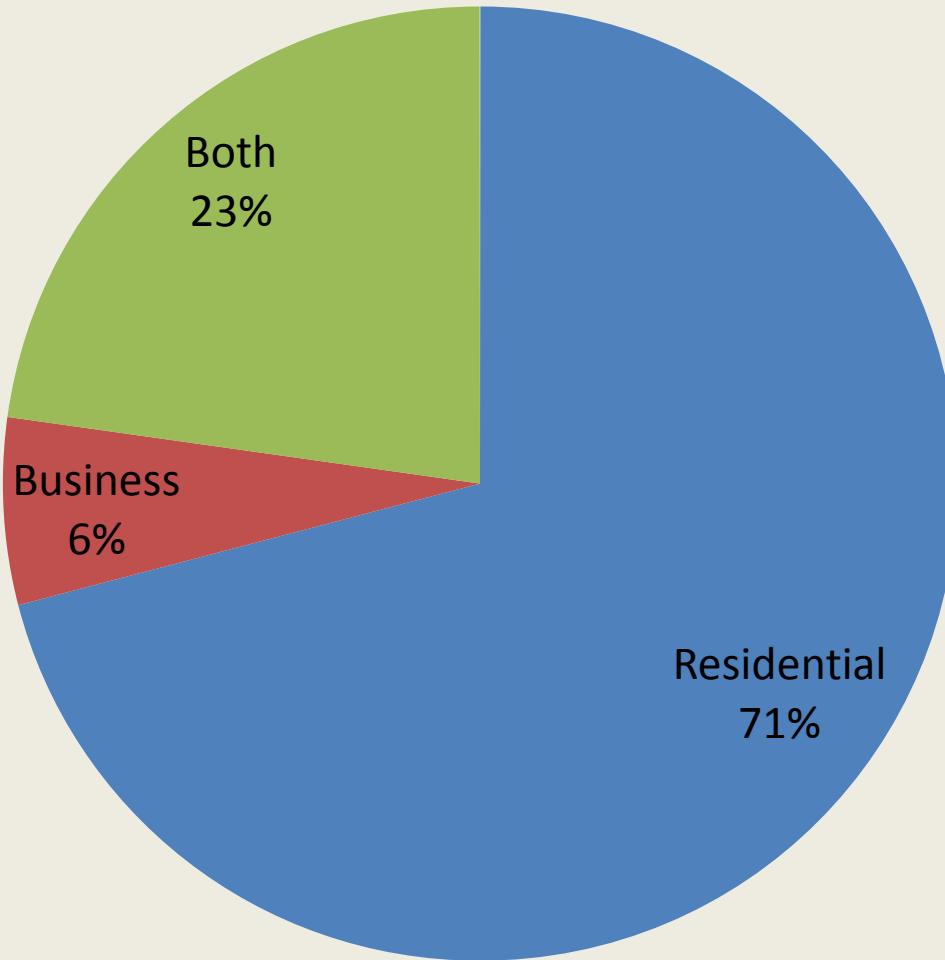
Interim Results



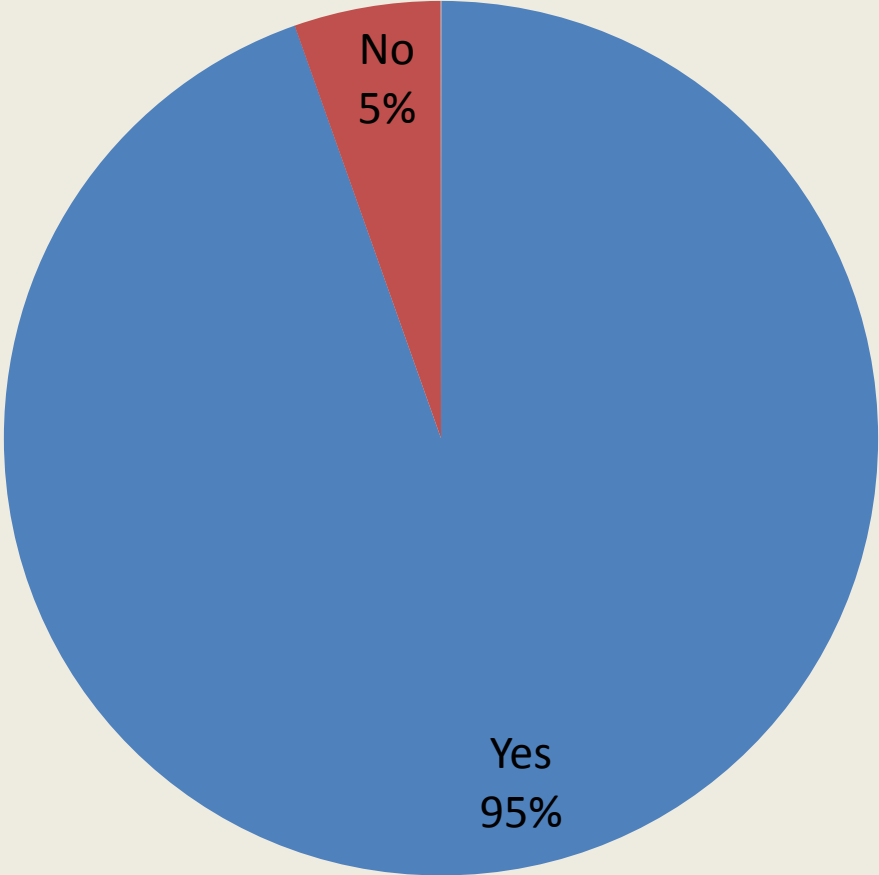
BNF Broadband Survey 2013

- Survey open between 13 June – 9 August 2013
- Need for survey identified by BNF Broadband Development Group
- Details of survey sent via various local networks via email, press, web, social media and more
- 444 responses to date (as of Friday 12 July)
- Interim results today – Full report to follow mid August

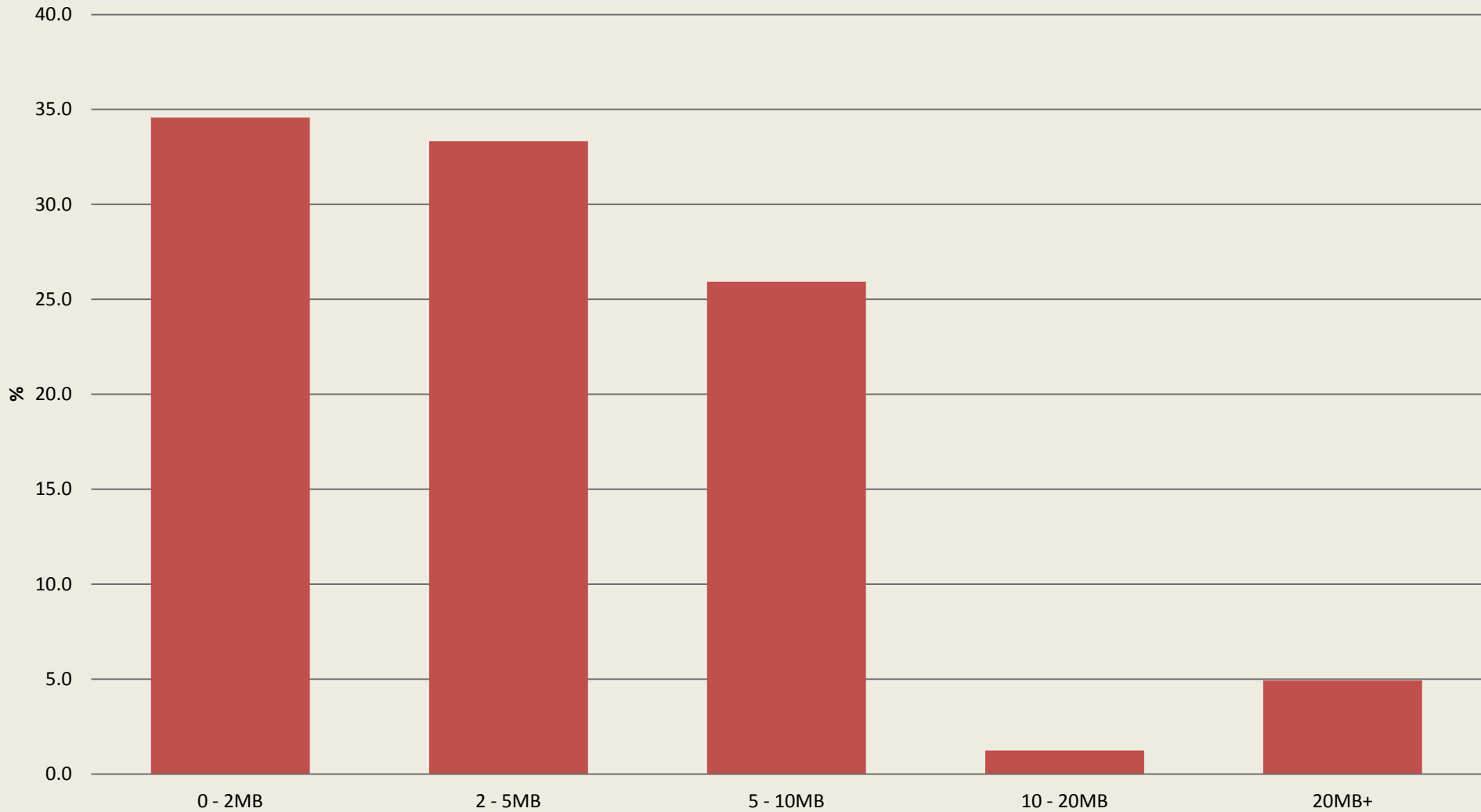
Is your property?



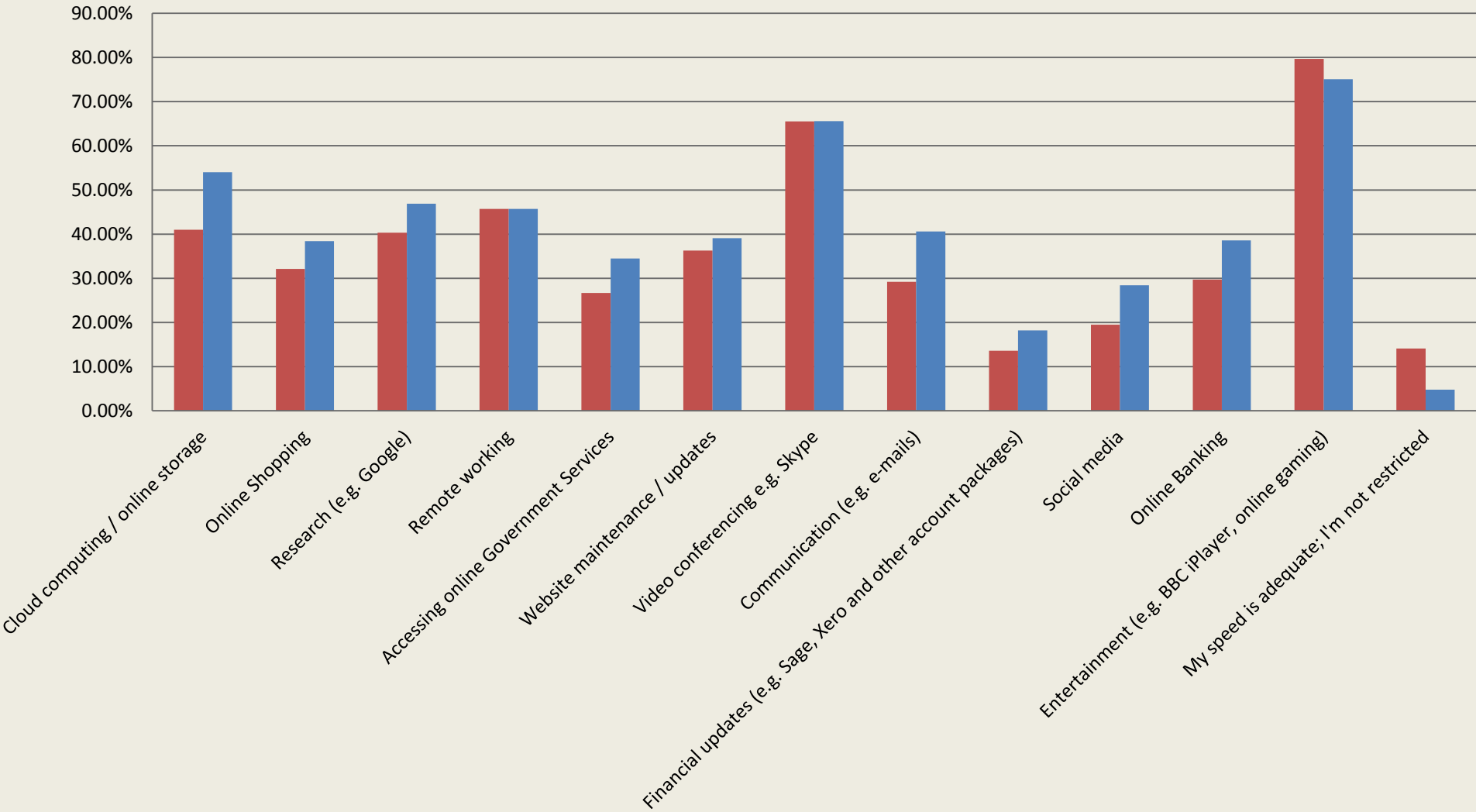
Do you think you will require a faster speed than you currently have by the end of 2015?



Following your broadband speed test what download speeds are you achieving?



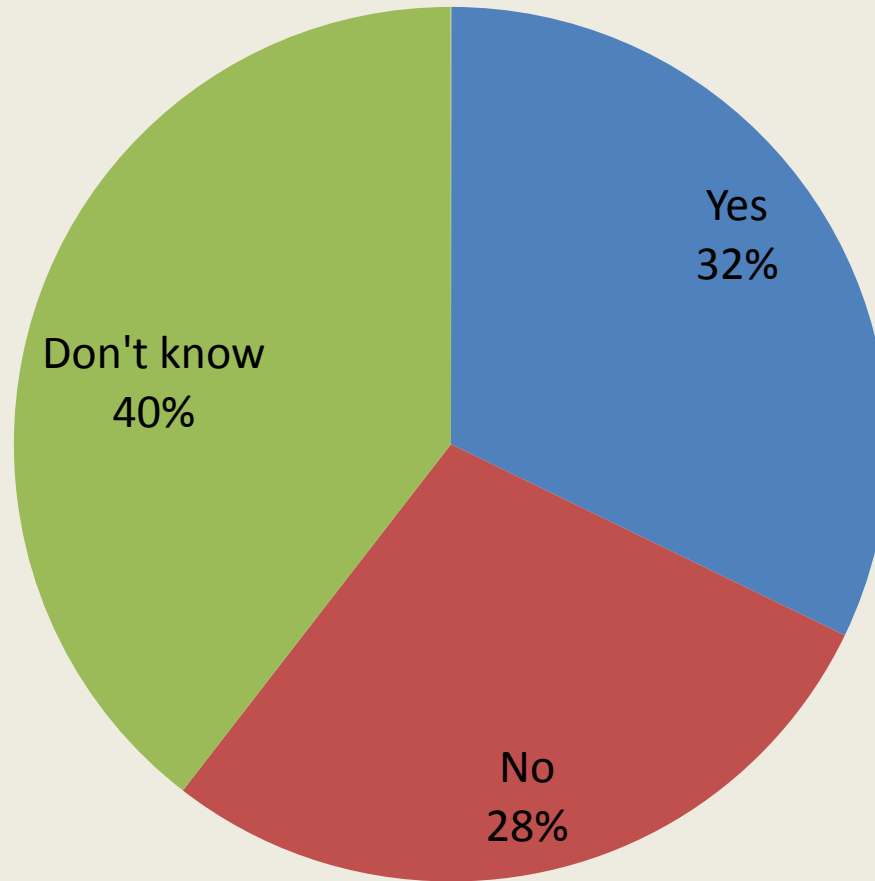
Broadband Activities in the New Forest (Tick all that apply)



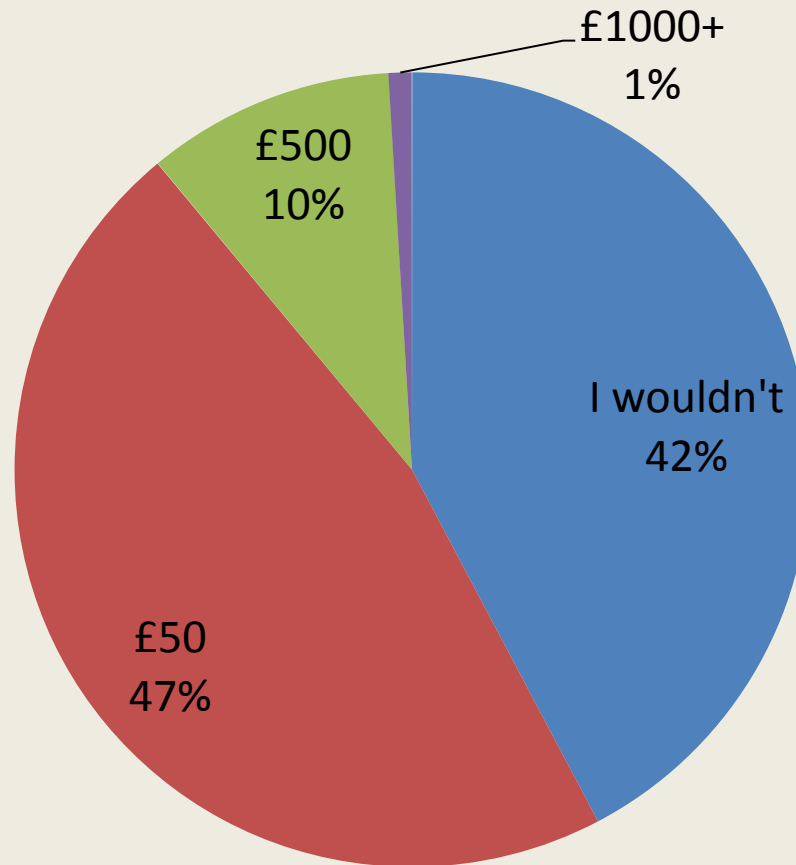
■ Which of the following are you unable to do or find difficult to do owing to poor broadband speeds? (Tick all that apply)

■ Which of the following would you be likely to use further should you have the speeds to do so? (Tick all that apply)

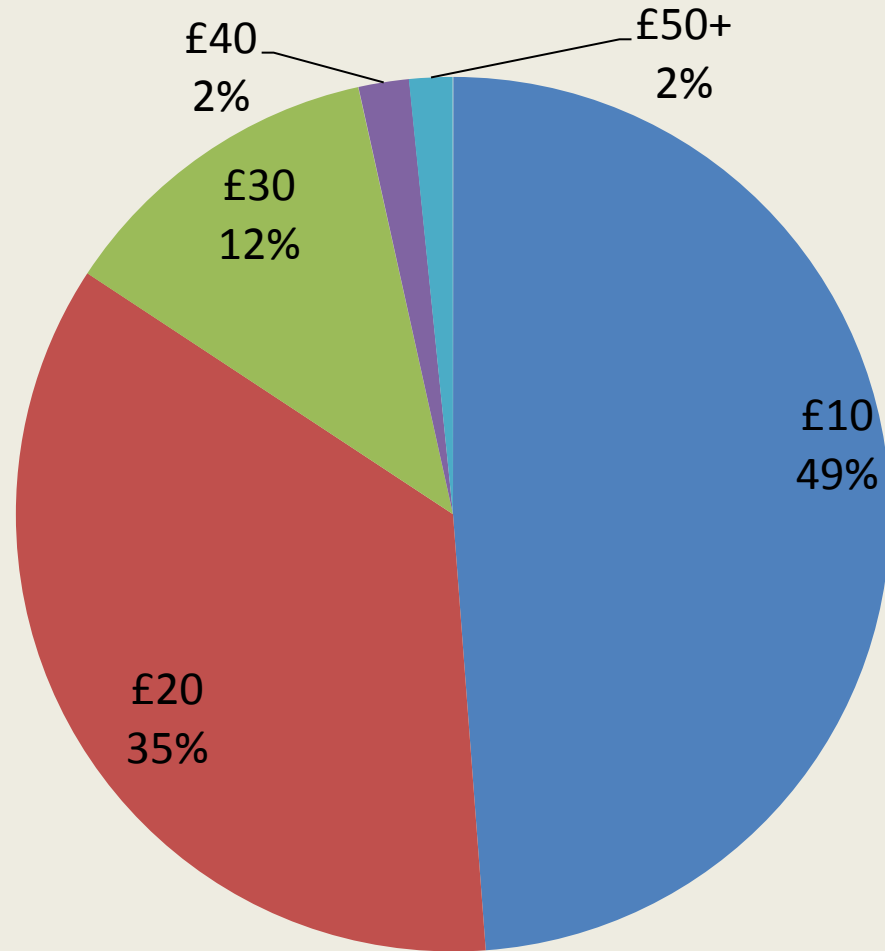
Has your business lost work owing to inadequate broadband speeds?



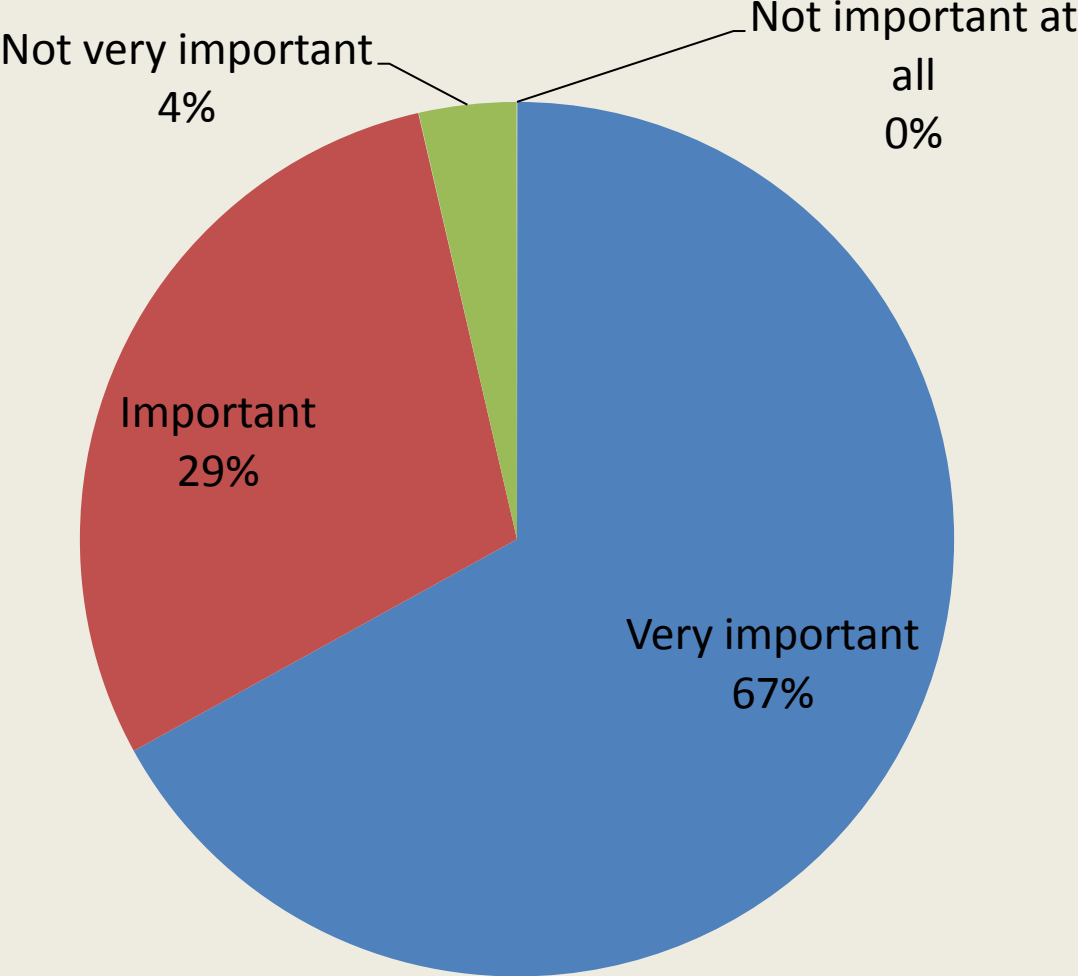
How much would you be prepared to financially contribute towards superfast broadband (24MB) as a one-off cost?



How much would you be prepared to pay per month for superfast broadband (24MB)?



How important is broadband to your everyday life?



Written Responses

- *“Inability to access video material and very large files has begun to impact negatively - contracts lost.”*
- *“Poor ability to use Skype has meant I have either lost work or have had to pay for expensive international phone calls”*
- *“I could not continue my business as a result of virtually no speed for even basic use. As a result I now only advise in 'semi-retirement'.”*

Summary and next steps

- New Forest Residents and Businesses need faster Broadband
- Faster Broadband is critical to the local economy – business is suffering
- Some are prepared to find a solution at any cost
- We need more responses – You can help!